

# Delta - New Generation Collection

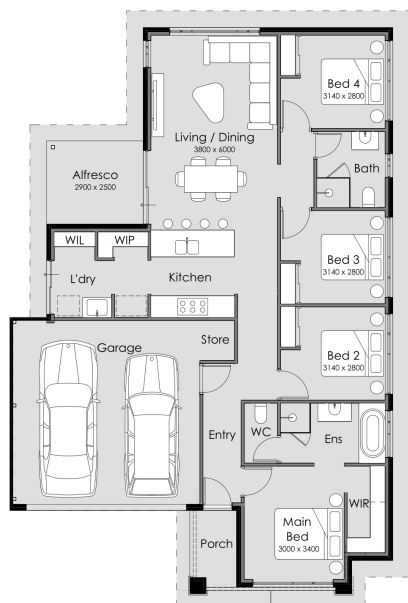
4 2 2 160 sqm

Facade name: Delta

## House Plan:

New  
— Generation  
Homes

DELTA



OVERALL WIDTH- 11.49m  
OVERALL LENGTH- 16.99m  
MIN BLOCK WIDTH- 12.5m  
MIN BLOCK LENGTH- 20m  
TOTAL AREA- 160.09m<sup>2</sup>

Powered by **ASUMMIT**

ANY REPRODUCTION IN WHOLE OR PART OF THIS DESIGN IS NOT PERMITTED AND IS SUBJECT TO 2022 ©

FLOOR PLANS ARE FOR ILLUSTRATIVE PURPOSES ONLY TO ASSIST IN DEPICTING THE LOOK AND FEEL OF THE DESIGN.

## LOT #335

Whistling Grove

Address: Honeywood Avenue, Wandi, 6167



375 m<sup>2</sup>

House and land package price:

From **\$555,250\***

## About package:

The four-bedroom Delta has been cleverly designed to give you space for everything you need. The open plan kitchen living dining flows into the alfresco area to extend your living space. The kitchen hosts a breakfast bar for the busy morning school run and so much storage to organize. The three roomy bedrooms have easy access to the washroom. The main suite at the front of the house, offers a spacious walk-in-robe and ensuite with shower and space for a freestanding bath. The Delta design has been thought out for family living in mind.

- Features:
- Walk-In Pantry
  - Alfresco
  - Walk-In Robe
  - Built-In Robes
  - Walk-In Linen
  - Store

## ENQUIRE NOW:

Gaurav Sharma • P: +61432900000 • E: GauravS@summithomes.com.au

New Generation Homes is a part of the Summit Homes Group(SHG) family; locally operated, family owned and proud to have completed over 40,000 West Australians homes. With 40+ years' experience, SHG has received the acclaimed honour of being named Western Australian Project Builder of the Year for the second year in a row (2021 and 2022) by Master Builder Bankwest Housing Excellence Awards, as well as Western Australian Professional Major Builder for two years in a row (2021 and 2020) by the Housing Industry Association.

Powered by **iBuildNew**

New  
— Generation  
Homes

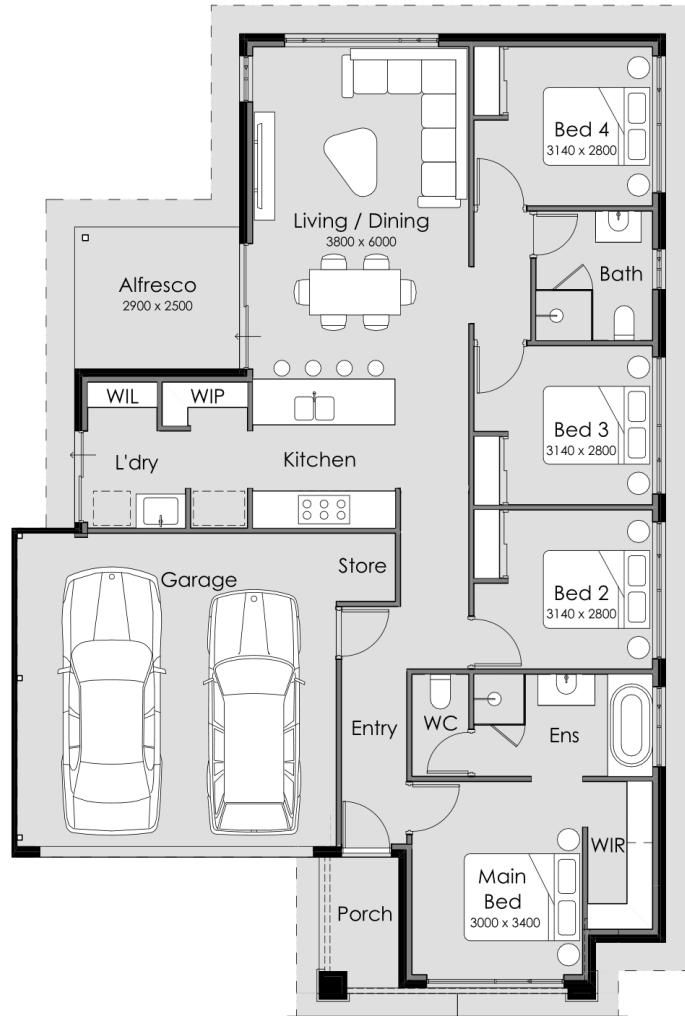
REF: INEWHL613626

## House Features:

- ✓ Remote Garage
- ✓ Alfresco
- ✓ Built-in Wardrobes
- ✓ Choice of Elevation

## Estate Features:

- ✓ Set in the heart of the quickly expanding southern corridor, Whistling Grove is nestled among many fantastic attractions this coastal pocket has to offer.



OVERALL WIDTH- 11.49m  
 OVERALL LENGTH- 16.99m  
 MIN BLOCK WIDTH- 12.5m  
 MIN BLOCK LENGTH- 20m  
 TOTAL AREA- 160.09m<sup>2</sup>

ANY REPRODUCTION IN WHOLE OR PART OF THIS DESIGN IS NOT PERMITTED AND IS SUBJECT TO 2022 ©

Powered by **SUMMIT**

FLOOR PLANS ARE FOR ILLUSTRATIVE PURPOSES ONLY TO ASSIST IN DEPICTING THE LOOK AND FEEL OF THE DESIGN.

## ENQUIRE NOW:

Gaurav Sharma • P: +61432900000 • E: GauravS@summithomes.com.au

New Generation Homes is a part of the Summit Homes Group(SHG) family; locally operated, family owned and proud to have completed over 40,000 West Australians homes. With 40+ years' experience, SHG has received the acclaimed honour of being named Western Australian Project Builder of the Year for the second year in a row (2021 and 2022) by Master Builder Bankwest Housing Excellence Awards, as well as Western Australian Professional Major Builder for two years in a row (2021 and 2020) by the Housing Industry Association.